

BELVEDERE SQUARE

WIMBLEDON, LONDON, SW19 5DJ



Wimbledon
Homes

Charming Cottage in the heart of Wimbledon Village

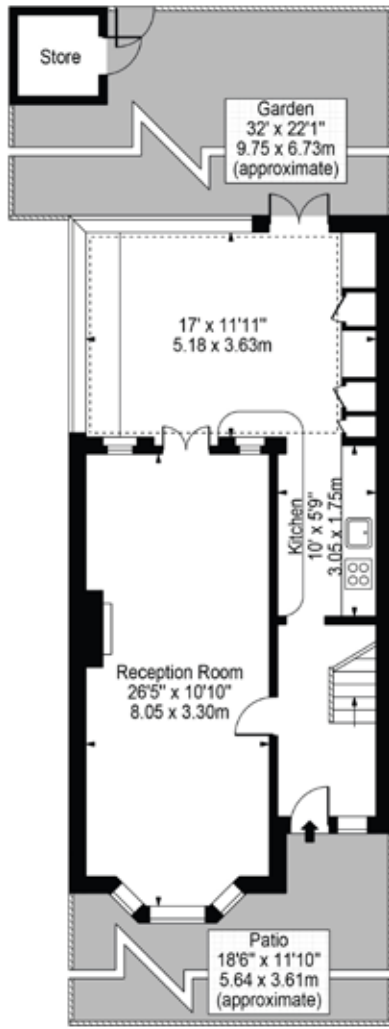
Rarely available and on the market for the first time in 40 years this exquisite semi-detached cottage is tucked away at the end of a beautiful square right in the heart of Wimbledon Village. The house has a large reception/drawing room, kitchen and conservatory. Upstairs are 2 double bedrooms and two bathrooms, one ensuite.

The south facing walled garden is a particular feature of the cottage, opening onto Courthope Road at the back with the possibility of providing OSP (STPP).

- Reception/drawing room
- Conservatory
- Galley kitchen
- 2 double bedrooms, one ensuite
- South facing walled garden





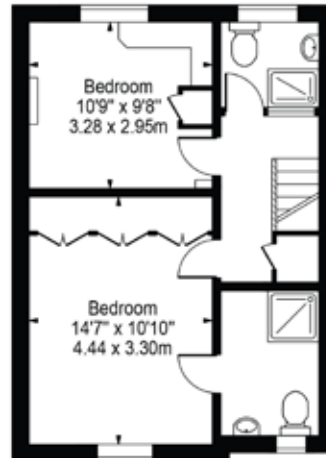


Ground Floor



Belvedere Square, SW19

Approx. Gross Internal Area 1048 Sq Ft - 97.36 Sq M
(Excluding Store)



First Floor

Energy Efficiency Rating		Current	Potential
Less energy efficient - lower running costs			
90-100	A		
81-89	B		
72-80	C		72
63-71	D		
54-62	E	45	
45-53	F		
35-44	G		
Not energy efficient - higher running costs			
England, Scotland & Wales		EU Directive 2002/91/EC	

Wimbledon Homes
38 High Street
Wimbledon, SW19 5BY

www.wimbledonhomes.com
enquiries@wimbledonhomes.com
0208 947 7171

Wimbledon Homes