

ST JOHN'S ROAD

WIMBLEDON, SW19 4PH



Wimbledon
Homes

This picturesque, larger than average end of terrace Victorian cottage is set on a raised plot with far reaching views.

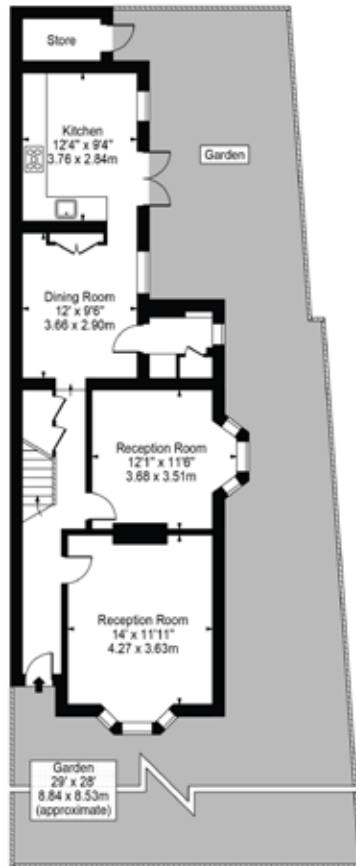
Located a short walk from Wimbledon Common, Village, Town and Station.

The house has three reception rooms on the ground floor and a fully fitted kitchen opening out onto the secluded southerly garden. Upstairs are 4 bedrooms and two bath/shower rooms. The property is beautifully presented and retains many period features. There is the potential to extend on both the ground and first floor STPP.

- 2 receptions rooms
- Dining room
- Kitchen
- 4 bedrooms
- 2 bath/shower rooms
- Secluded southerly garden with far reaching views
- Potential to extend on ground and first floor STPP



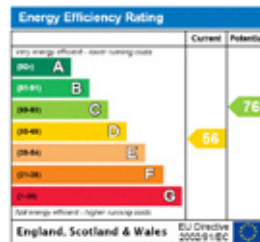




Ground Floor



First Floor



St. John's Road, SW19

Approx. Gross Internal Area 1462 Sq Ft - 135.82 Sq M
(Excluding Store)

Wimbledon Homes
38 High Street
Wimbledon, SW19 5BY

www.wimbledonhomes.com
enquiries@wimbledonhomes.com
0208 947 7171

Wimbledon
Homes