

BELVEDERE AVENUE



Wimbledon
Homes



BELVEDERE AVENUE

LONDON • SW19

This stunning and elegant 6 bedroom Edwardian Grade 2 listed property in the heart of Wimbledon Village has versatile family accommodation, entertaining space with views over the landscaped garden as well as a garage, separate gym and off street parking for 2 cars.

Situated on a large corner plot, this house offers over 5,200 sq ft of space with lots of sunlight flooding through the house.

The property is located a stones throw from Wimbledon Village High street, minutes walk to Wimbledon Common, local schools and a 10 minute walk to Wimbledon mainline station.

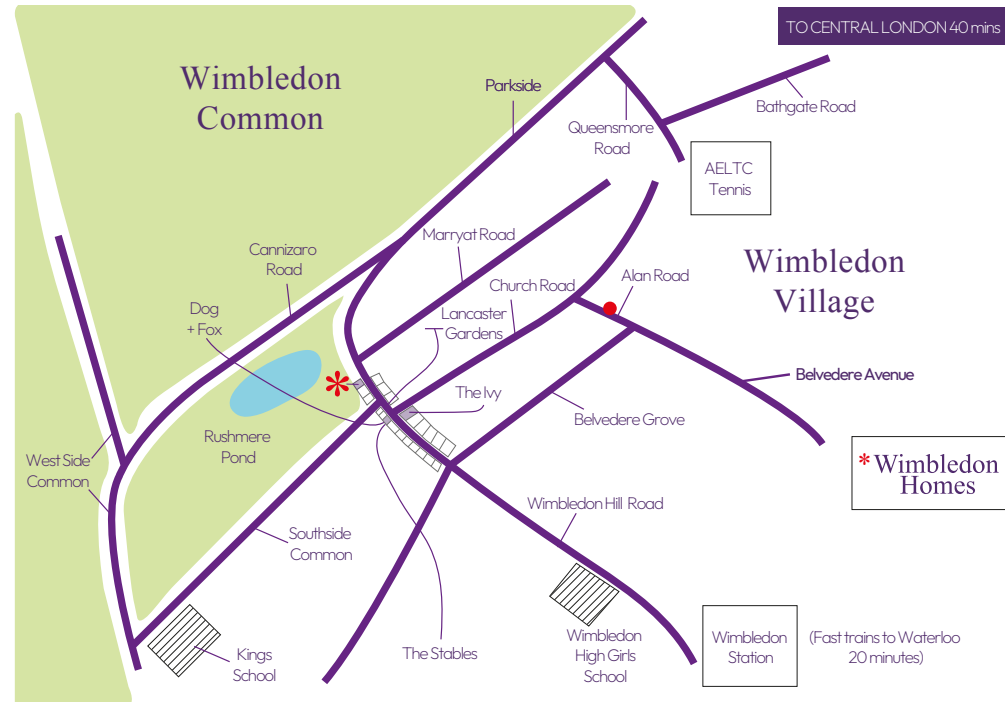
- High ceilings
- South West facing plot
- Spacious wood panelled entrance hall with fireplace
- Stunning modern kitchen (recently built) with large family/dining space, underfloor heating, glass sliding doors opening onto the manicured garden and patio and sedum roof.
- Two good sized reception rooms with fireplaces, bay windows and decorative cornice mouldings
 - Wine room; large utility room; cloakroom and boot room
 - Master bedroom with ensuite bathroom, fireplace and large bay window
 - The first floor has a further 3 bedrooms and one family bathroom
- The second floor has two bedrooms and a further large bedroom/study/games room with ensuite
 - Off street parking for two cars/Separate garden room with gym and garage
- Private garden with a watering system, well stocked borders, cherry trees and seating areas
 - Recent new roof



BELVEDERE AVENUE

Belvedere Avenue is one of the most prestigious addresses in Wimbledon Village and only a stone's throw from the High Street with its restaurants, upmarket grocers, delicatessens and boutiques such as the The Ivy, Bayley & Sage, Vallebona and MatchesFashion.

- 10 minute walk to Wimbledon town and station
- 8 minute walk to Wimbledon Common
- 10 minute walk to Kings College School and Wimbledon High School
- 5 minute drive to A3





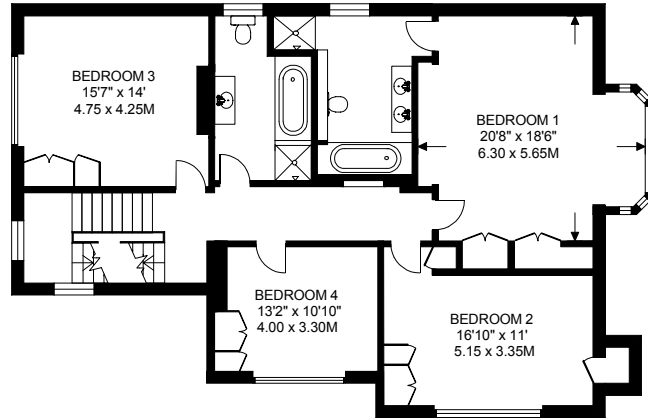
BELVEDERE AVENUE, WIMBLEDON, SW19

APPROXIMATE INTERNAL FLOOR (LIVING) AREA

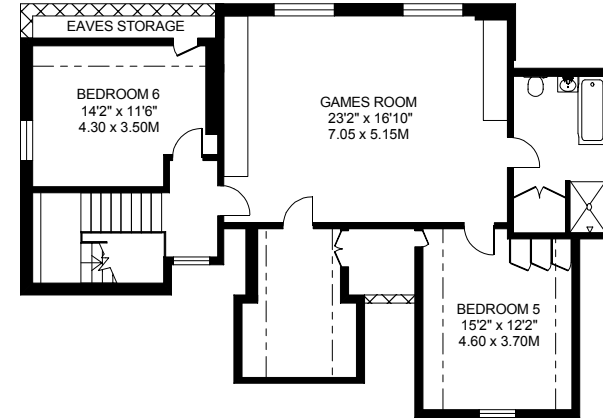
4706 SQ.FT. / 437.2 SQ.M. PLUS 496 SQ.FT. / 45.9 SQ.M.

TOTAL AREAS SHOWN ON PLAN

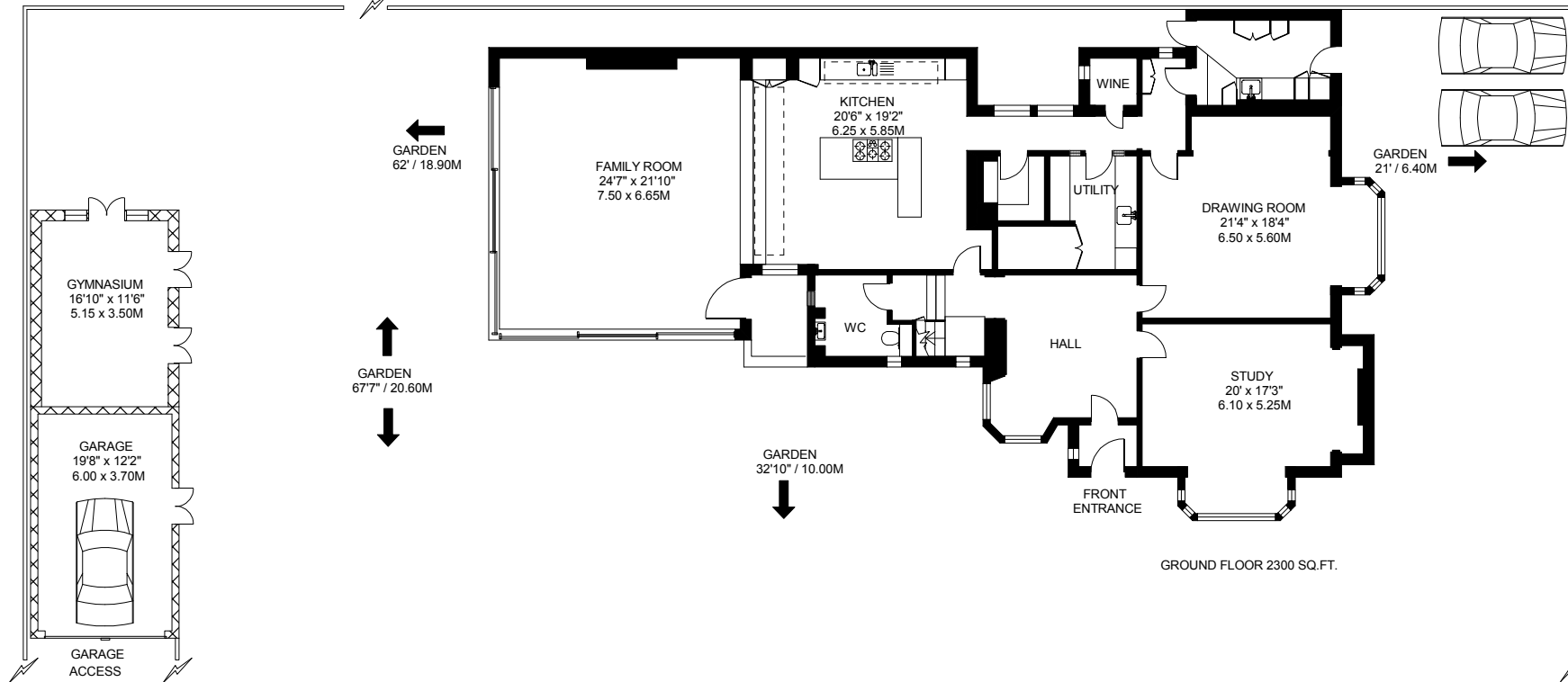
5202 SQ.FT. / 483.3 SQ.M.



FIRST FLOOR 1341 SQ.FT.



SECOND FLOOR 1065 SQ.FT.



GROUND FLOOR 2300 SQ.FT.