

Wimbledon Homes



Marryat Road, Wimbledon, London, SW19

£28,000 per month + fees

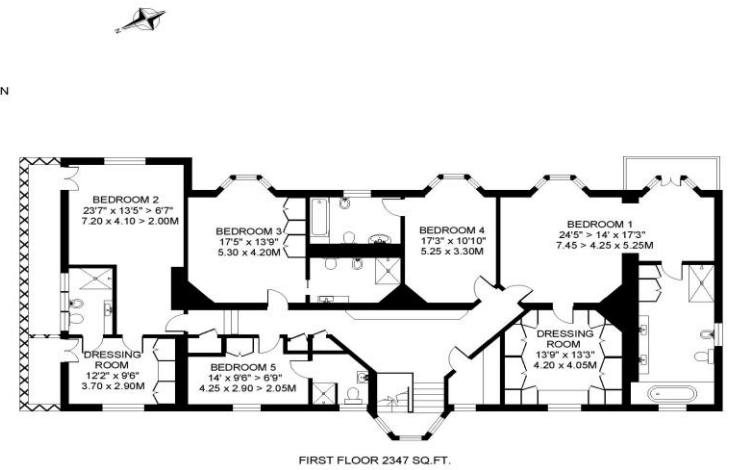
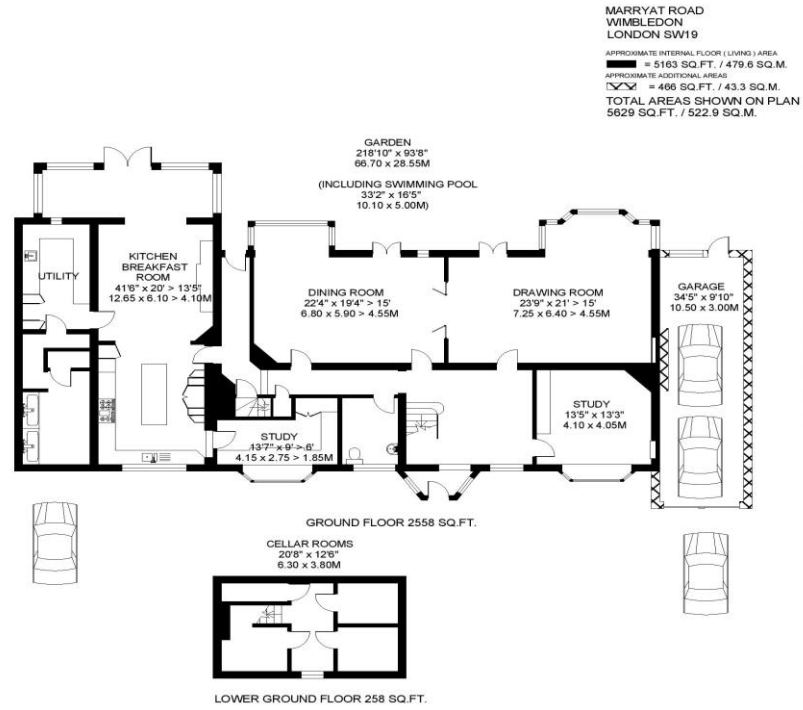
Furnished

Marryat Road, Wimbledon, London, SW19



Stunning period property in central Village location which has been the subject of a total renovation to an extremely high specification and provides elegant entertaining space, a magnificent principal suite with bathroom and dressing area, four further bathrooms all ensuite and a large south facing landscaped garden with full width terrace and swimming pool.





COPYRIGHT
FLOOR PLAN PRODUCED FOR "WIMBLEDON HOMES" by www.floorplans.co.uk
This plan is approximately correct, but not to scale, and is for guidance only. All measurements are shown at their current value in the current edition of the BSI Code of Measuring Practice. Where a room has a sloping ceiling, the dotted line marks the mean 1.5m height, and the measurements are shown at that level.





Energy Efficiency Rating		
	Current	Potential
Very energy efficient - lower running costs		
(92+) A		
(81-91) B		84
(69-80) C	69	
(55-68) D		
(39-54) E		
(21-38) F		
(1-20) G		
Not energy efficient - higher running costs		
England, Scotland & Wales	EU Directive 2002/91/EC	

Wimbledon Homes Ltd

38 High Street
Wimbledon Village
London
SW19 5BY

T: 020 8947 7171
E: enquiries@wimbledonhomes.com
www.wimbledonhomes.com

Wimbledon Homes Ltd, 38 High Street,
Wimbledon Village, London SW19 5BY
Company no. 13929783



Disclaimer

Every attempt has been made to ensure accuracy, however these property particulars are approximate and for illustrative purposes only. They have been prepared in good faith and they are not intended to constitute part of an offer of contract. We have not carried out a structural survey and the services, appliances and specific fittings have not been tested. All photographs, measurements, floor plans and distances referred to are given as a guide only and should not be relied upon for the purchase of any fixture or fittings. Lease details, service charges and ground rent (where applicable) are given as a guide only and should be checked prior to agreeing a sale.