

SOUTHSIDE COMMON



Wimbledon
Homes



SOUTHSIDE COMMON

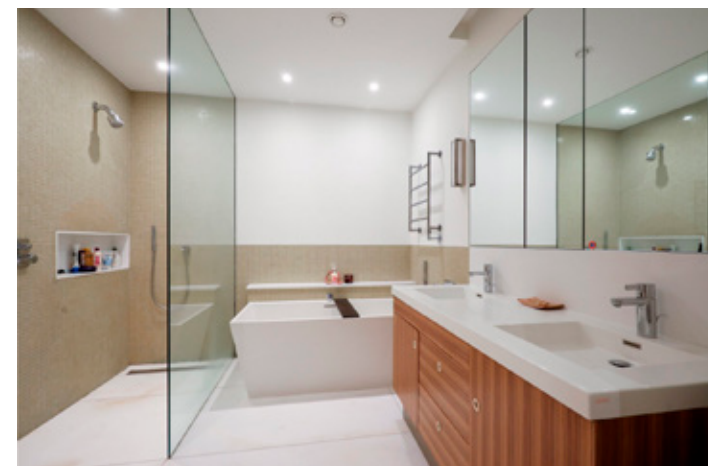
WIMBLEDON • LONDON • SW19

Stunning 3 bedroom modern apartment with south facing garden and high ceilings. Arguably one of the best apartments in Wimbledon village set within a secure gated development overlooking Wimbledon Common and within 5 minutes walk of Wimbledon Village high street. These apartments rarely come to the market.

The apartment is over 2,000 sq ft of spacious and lateral living. It also comes with underground parking and storage spaces. The apartment is in fantastic condition.

Southside Common is one of the most prestigious locations, overlooking Wimbledon Common and just a few minutes' walk from Wimbledon Village High street with its shops, boutiques, and local schools.

- 3 double bedrooms
- Spacious open plan Kitchen/ Dining/ Reception room
- Private south facing patio and raised garden area
- Secure gated development
- High specification
- Underground parking and 2 further storage spaces
- 2019 SQFT
- Share of Freehold
- Within 15 minute walk to Wimbledon Town and mainline station
- Walking distance to local top schools such as Kings College School, Wimbledon Prep, The Study and Wimbledon High



Southside Common, SW19

Approx. Gross Internal Area 2019 Sq Ft - 187.57 Sq M
(Excluding Store)

Approx. Gross Internal Area Of Store 15 Sq Ft - 1.38 Sq M



Lower Ground Floor

Energy Efficiency Rating	
Current	Potential
Very energy efficient - lower running costs	
(92-100) A	
(81-91) B	81 81
(69-80) C	
(55-68) D	
(39-54) E	
(21-38) F	
(1-20) G	
Not energy efficient - higher running costs	
England, Scotland & Wales EU Directive 2002/91/EC	

For Illustration Purposes Only - Not To Scale Floor Plan by Mira Nikolova Photography

This floor plan should be used as a general outline for guidance only and does not constitute in whole or in part an offer or contract. Any intending purchaser or lessee should satisfy themselves by inspection, searches, enquiries and full survey as to the correctness of each statement. Any areas, measurements or distances quoted are approximate and should not be used to value a property or be the basis of any sale or let.